

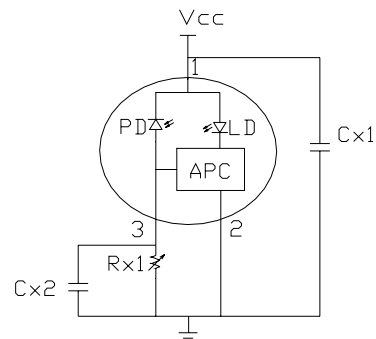




## Visible APC Laser Module      LMAPCD-650-01

### Laser power Adjustment Procedure

1. Connect 1 uF capacitor (Cx1) between Pin1 and Pin2.
2. Connect 20~50K ohm variable resistor (Rx1) between Pin2 and Pin3.
3. Set Vcc to the designed value.
4. Adjust Rx1 to obtain the desired output power.
5. Laser Safety Precautions



- (1) Do not increase Vcc value when the laser module is working near the maximum power. That is to protect laser from overdriving condition and make sure power is under 3 mW.
- (2) Do not operate the device above the maximum rating condition, even momentarily. It may cause unexpected permanent damage to the device.

### Laser power stability

P1 : 3mW

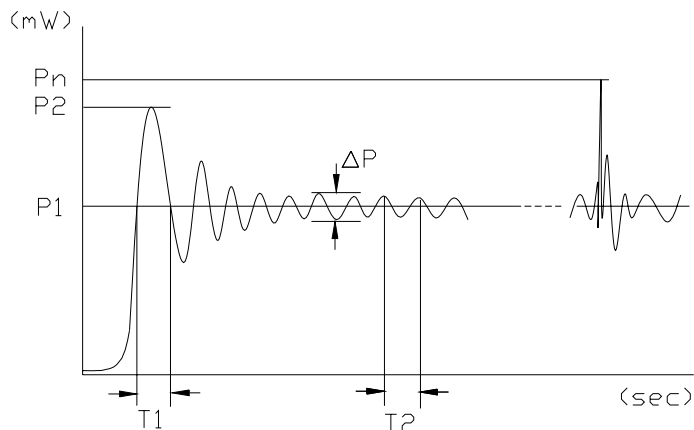
P2 : < 3.5mW

Pn : <3.5mW

$\Delta P$  : < 0.5mW

T1 : < 0.1us

$f2=(1/T2)$  : 3MHz



#### NOTE:

P1 : Mean power

P2 : Max power from turning on power

Pn : Max power from Vcc noise

$\Delta P$  : Power Amplitude of vibration

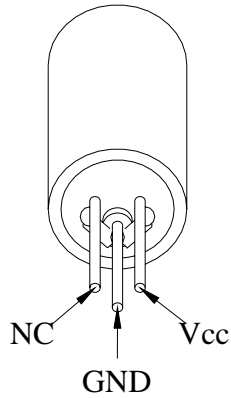
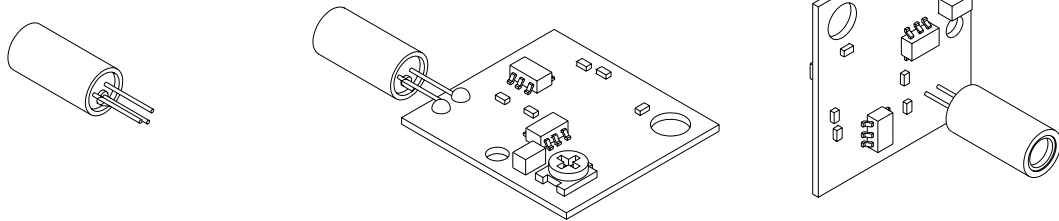
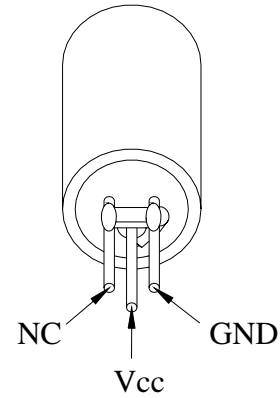
T1 : Time between trigger and convergence

$f2=(1/T2)$  : Frequency of output power

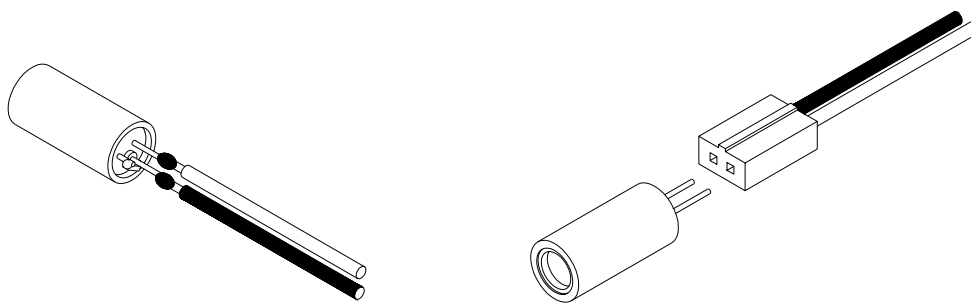
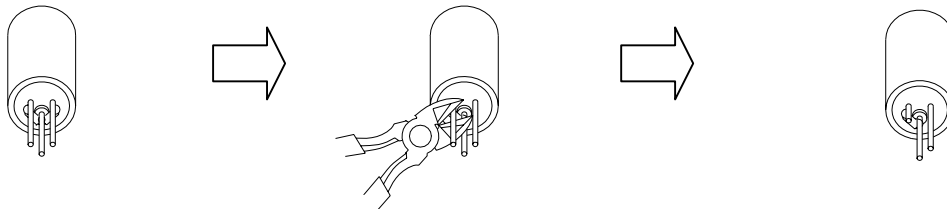
***Visible APC Laser Module*****LMAPCD-650-01**

## Instruction manual

## 1. DC Power connection mode 1

**A type** : Heat sink stand (-)**B type** :Heat sink stand (+)

## 2. DC Power connection mode 2

**Laser Safety Precautions**

1. Do not look into the laser beam directly by eyes. The laser beam may cause severe damage to human eyes.
2. Optical Lens is made of plastic or glass . Do not contaminate lens by soiling, oil or chemical.